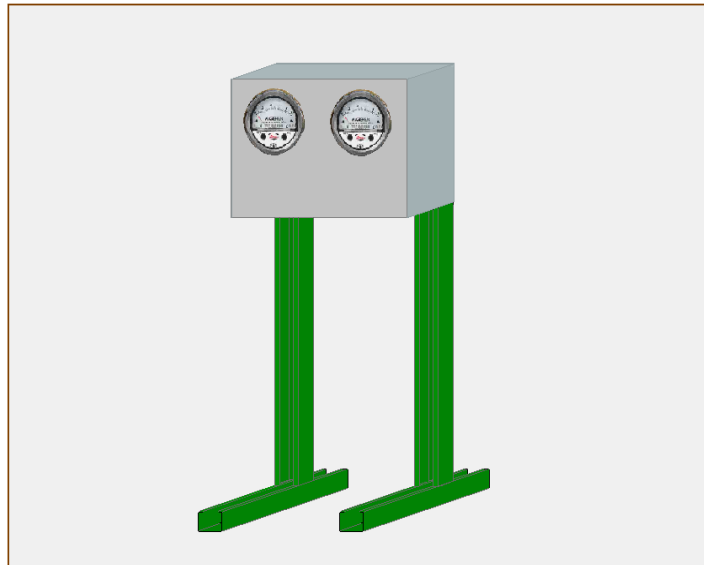
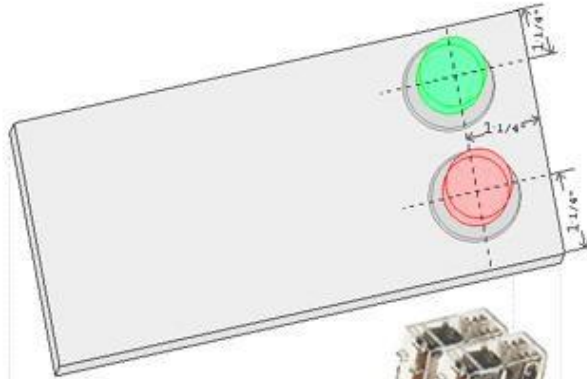


## Celestica Exhaust Control for the BTU Forced convection reflow soldering oven



This was an amazing device I had built for the exhaust stacks on the front and the rear of this BTU reflow oven with servo motors inside the stacks to control the interior of the oven to positive pressure. Initially we were just looking for energy savings. The three phase volt-amp data acquisition over 12 hours was 38% less because we were able to profile the oven with less power and achieving the same temperature in each zone. There were additional benefits as well, we were able to turn down the nitrogen to each zone and still we were able to achieve perfect wetting of the solder. Also the interior humidity was down to 12% keeping the enclosure of the oven flux free for a longer period of time saving down time to clean it.



\*Note: From this point we will use 24v. AC relays the DC Power supply will be eliminated and 24v.AC relays will be used for all other Ovens.



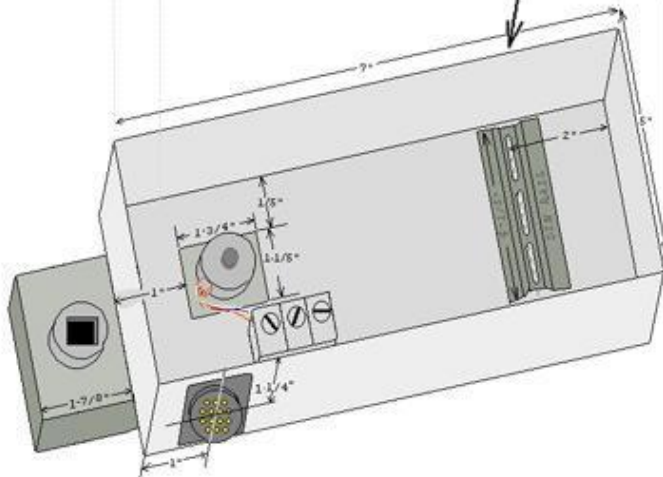
24v. AC  
 ✓ Omron 8 DPDT 6C899 Standard G2R2S 6C896 \$8.21 Each\*

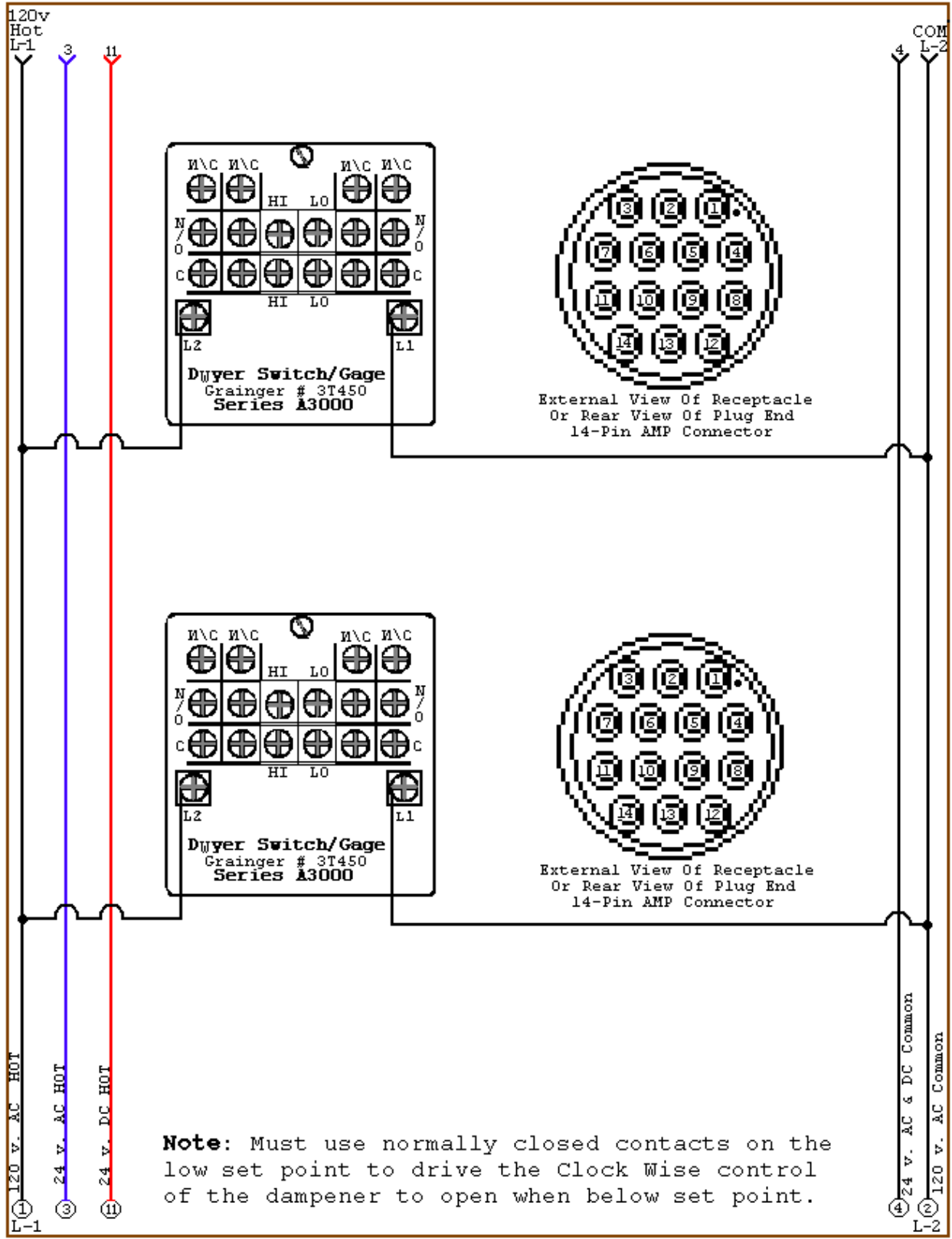


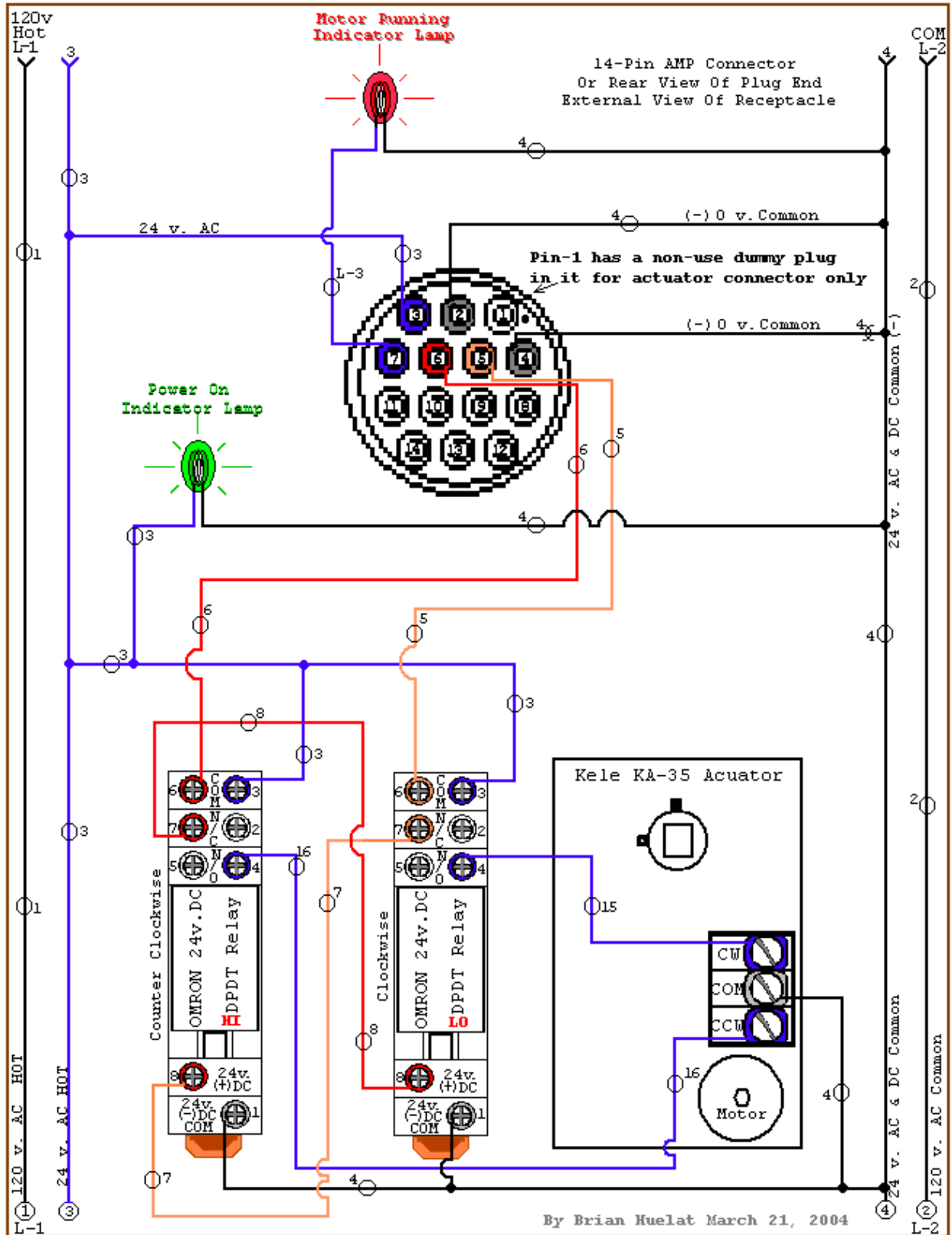
✓ J Square 8 DIN relay socket Omron P2RF08E 6C899 \$6.48 Each

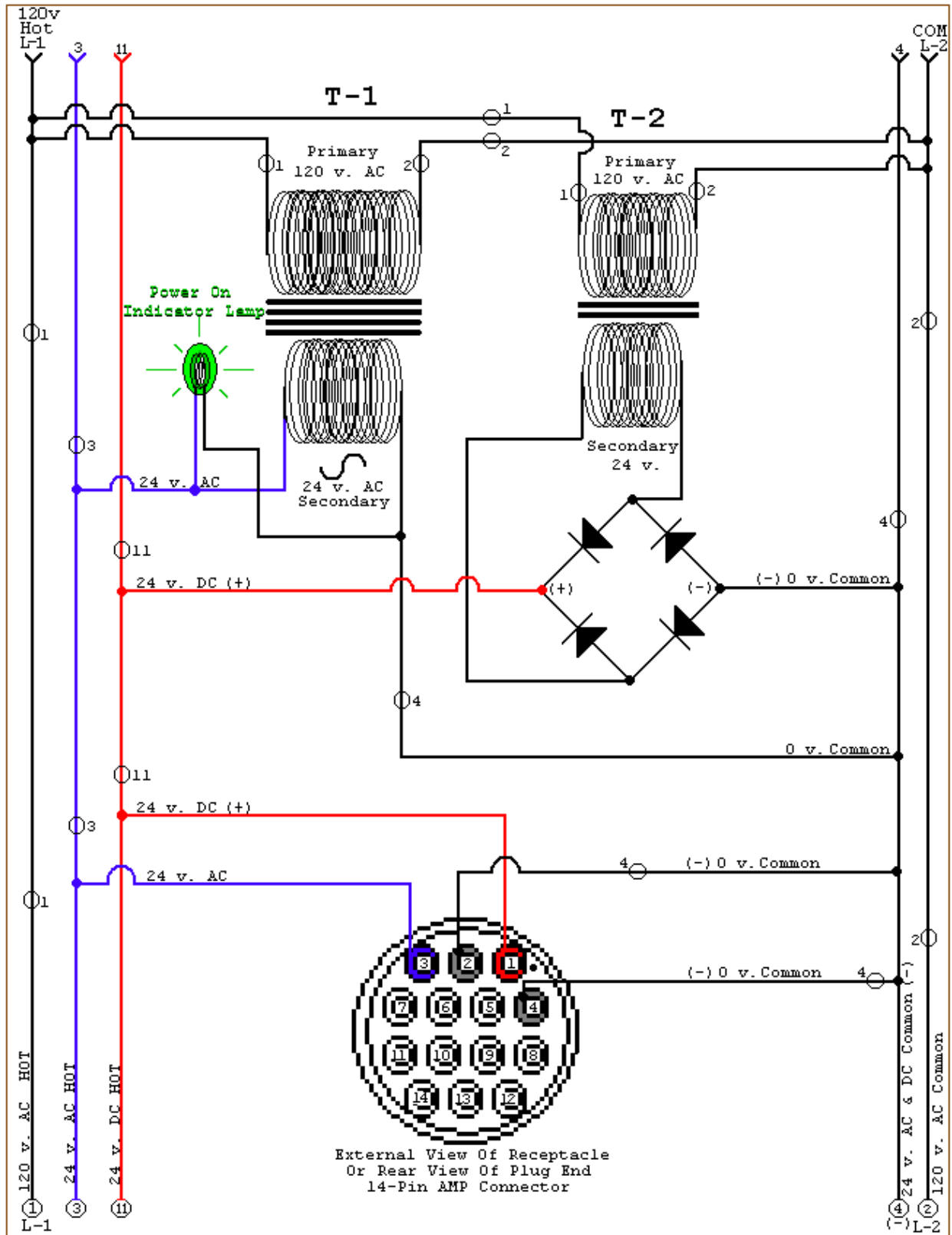
**G2R SERIES**

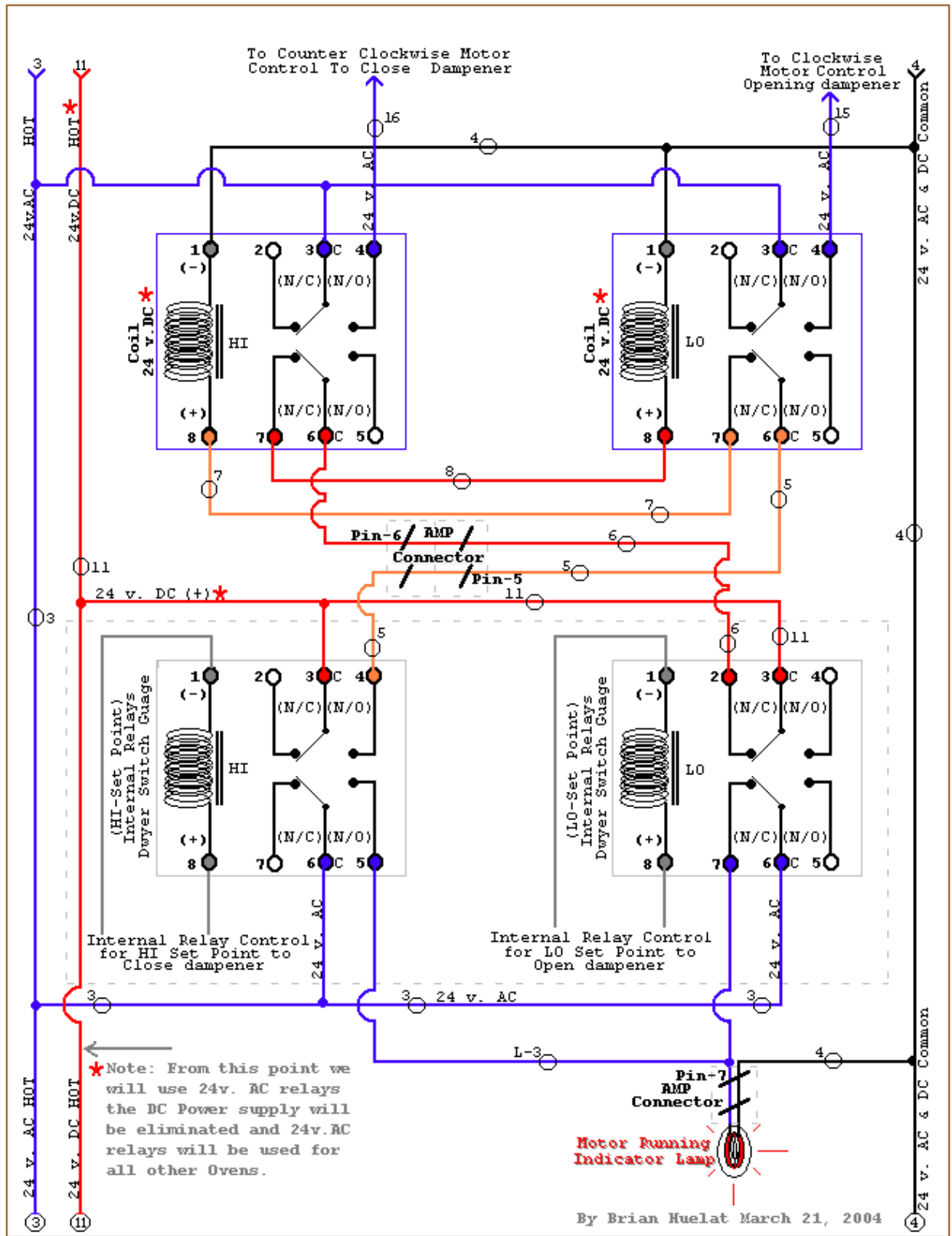
✓ = Order 4 per Oven

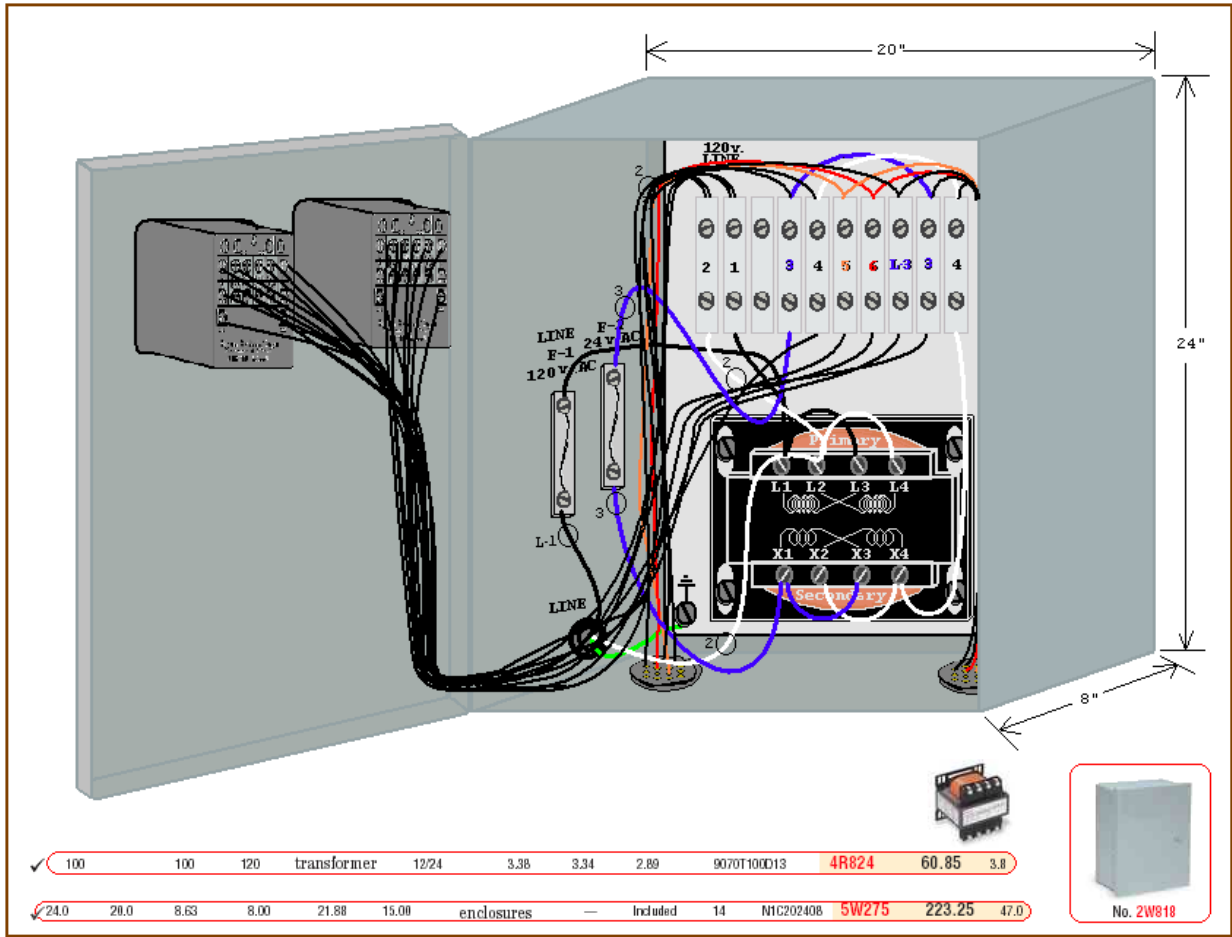












Stop by your nearest branch  
For great service...fast

**Test Instruments**  
**Gages & Transmitters**



No. 3T455

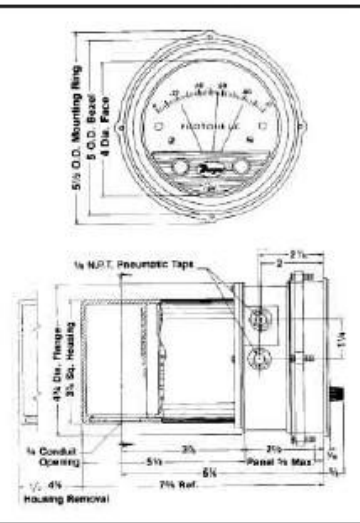
**Photohelic® Pressure Switch/Gages**

Provides fail safe protection in the event of a loss of electrical power or pressure. Permits both high and low alarms or limit controls by use of two phototransistor circuits and two DPDT relays. Relays are de-energized when gage pointer is to the left of respective set points. Full scale accuracy to within  $\pm 2\%$ . Gage connections are 1/8" NPT. Relays rate at 10 amps at 110/240VAC; resistance.

Uses: Control pressures in air conditioning systems, clean rooms, fluidic and pneumatic control systems, material handling equipment;

alarm or control fume exhaust systems; control pressure in air structures; used for low pressure air reading and control.

- Power requirements 110V, 50/60 Hz



Pressure Range (In. W. C.)	Rated Total Pressure	Minor Divisions Pressure Range Only	Velocity Range (FPM)	Dwyer Model	Stock No.	Each	Shpg. Wt.
<b>PRESSURE AND AIR VELOCITY SCALE MODELS</b>							
0-1.0	20" Hg to 25 psig	0.02	500-4000	3001AV	1W459	✓ \$283.25	4.8
0-2.0	20" Hg to 25 psig	0.05	1000-5600	3002AV	1W457	✓ 283.25	4.8
0-10.0	20" Hg to 25 psig	0.02	2000-12500	3010AV	1W453	✓ 283.25	4.8
Pressure Range (In. W. C.)	Rated Total Pressure	Minor Divisions	Dwyer Model	Stock No.	Each	Shpg. Wt.	
<b>PRESSURE SCALE MODELS</b>							
0-0.25	20" Hg to 25 psig	0.005	3000-00	3T450	✓ \$296.50	5.0	
0-0.50	20" Hg to 25 psig	0.01	3000-0	3T451	✓ 283.25	10.0	
0-1.0	20" Hg to 25 psig	0.02	3001	3T452	✓ 283.25	4.9	
0-2.0	20" Hg to 25 psig	0.05	3002	3T453	✓ 283.25	4.8	
0-3.0	20" Hg to 25 psig	0.1	3003	1W455	✓ 283.25	5.9	
0-5.0	20" Hg to 25 psig	0.10	3005	3T454	✓ 283.25	5.0	
0-10	20" Hg to 25 psig	0.20	3010	3T455	✓ 283.25	4.1	
0-25	20" Hg to 25 psig	0.50	3025	3T456	✓ 283.25	7.1	
0-50	20" Hg to 25 psig	1.0	3050	3T457	✓ 283.25	5.0	
0-100	20" Hg to 25 psig	2.0	3100	3T458	✓ 283.25	4.8	
0.25-0-0.25	20" Hg to 25 psig	0.01	3300-0	1W451	✓ 289.75	4.8	
0.50-0-0.50	20" Hg to 25 psig	0.02	3301	1W449	✓ 289.25	4.5	
0-10 psi	20" Hg to 35 psig	0.20	3210	3T460	✓ 296.50	4.9	
0-15 psi	20" Hg to 35 psig	0.50	3215	3T461	✓ 296.50	4.9	



**OMRON**

✓ = Order 4 per Oven



No. 2W929  
LY Series



No. 6C894  
G2R Series



No. 5ZH80  
MJN Series



No. 2W933  
MY Series

## Square Base General Purpose Relays

### LY SERIES

Arc barrier equipped with high dielectric strength of 2000 VAC. LED indicator. Long dependable service life is assured by AgCdO contacts. All models meet UL and CSA approvals.

### MY SERIES

Features include LED indicator, push-to-test button, and cadmium-free contacts that are environment-friendly. Built-in operation indicator and nameplate.

### MJN SERIES

Rugged power driver offers superior 3/16" through-air and 3/8" over-surface spacing. Interlocked frame and contact block prevent contact misalignment during plug-in. Recognized for 1/2 HP motor controller applications at 240/480/600 VAC. UL and CSA recognition as motor controllers through 600 VAC. UL and CSA approved.

### G2R SERIES

Flange Mount: Creepage distance off 80mm (0.31 in.) minimum between coil and contact. Safety-oriented design assures high surge resistance: 10,000V minimum between coil and contact.

Standard: Low profile relay is 15.7mm max. in height with cadmium-free contacts. 10kV impulse surge withstand. Clearance/creepage distance: 10mm/10mm. Tracking resistance: CTI>250. Low coil power of 400 mW. UL, CSA, and VDE approved.

No. of Pins	Contact Form	Suggested Socket (See Pg. 403)	Contacts Amp Rating R	HP Rating 120 VAC	HP Rating 240 VAC	Coil VA Rating	Description	Omron Model	12VAC Stock No.	24VAC Stock No.	120VAC Stock No.	240VAC Stock No.	Each	Shpg. Wt.
<b>AC RATED COILS</b>														
8	SPDT	4D659	15	10	—	1.10	Standard	LY1	—	2W925	2W926	—	\$7.31	0.1
8	DPDT	2A582	10	7.5	—	1/3	Standard	LY2	6C874	2W929	2W928	2XC00	8.37	0.1
8	DPDT	2A582	10	7.5	—	1/3	Neon	LY2N	—	6C875	6C876	6C877	11.29	0.1
8	DPDT	None	10	7.5	—	1/3	Range Mount	LY2F	—	2XC01	2XC02	—	8.56	0.1
11	3PDT	2XC08	10	7.5	—	1/3	Standard	LY3	—	2XC03	2XC04	2XC05	11.93	0.1
14	4PDT	2XC09	10	7.5	—	1/3	Standard	LY4	6C882	2XC06	2XC07	—	13.77	0.2
14	4PDT	2XC09	10	7.5	—	1/3	LED	LY4N	—	6C883	6C884	—	18.95	0.2
8	DPDT	4KN18	10	5	1/6	1/6	Standard	MY2	—	5ZJ01	5ZH99	—	5.93	0.1
8	DPDT	4KN18	10	5	1/6	1/6	LED & push to test	MY2IN	—	5ZJ05	5ZH04	—	6.26	0.1
10	DPDT	5ZJ21	5	—	—	1.10	Dual coil latching	MY2K	—	—	5ZJ08	—	36.80	0.1
14	4PDT	5ZJ21	5	5	1/6	1/6	Standard	MY4	6C886	2W932	2W931	—	7.22	0.1
14	4PDT	5ZJ21	5	5	1/6	1/6	Neon	MY4N	—	3A351	3A353	—	10.08	0.1
14	4PDT	5ZJ21	5	5	1/6	1/6	LED & push to test	MY4IN	—	5ZJ13	5ZJ12	—	8.29	0.1
8	DPDT	5X853	10	10	1/3	1/2	Standard	MJN2C	—	—	5ZH67	5ZH68	10.87	0.2
8	DPDT	5X853	10	10	1/3	1/2	Range Mount	MJN2CF	—	5ZH72	5ZH75	—	10.77	0.1
9	DPDT	5X853	10	10	1/3	1/2	Latching	MJN2CK	—	5ZH77	5ZH76	—	23.16	0.2
11	3PDT	5X853	10	10	1/3	1/2	Standard	MJN3C	—	—	5ZH80	5ZH81	11.69	0.2
11	3PDT	None	10	10	1/3	1/2	Range Mount	MJN3CF	—	5ZH86	5ZH85	5ZH87	12.93	0.2
4	SPNO	None	10	7	1/3	1/2	Range Mount	G2R1AT	—	6C890	6C891	—	6.88	0.1
5	SPDT	6C898	10	7	1/3	1/2	Standard	G2R1S	—	6C894	6C895	—	7.34	0.1
5	SPDT	None	10	7	1/3	1/2	Range Mount	G2R1T	—	6C892	6C893	—	7.64	0.1
✓ 8	DPDT	6C899	5	2	1/6	1/3	Standard	G2R2S	—	6C896	6C897	—	8.21	✓ 0.1
										12VDC	24VDC	110VDC		
<b>DC RATED COILS</b>														
8	SPDT	4D659	15	10	—	0.90	Standard	LY1	—	2W927	—	—	6.96	0.1
8	DPDT	2A582	10	7.5	—	1/3	Standard	LY2	6C873	2W930	—	—	8.37	0.1
8	DPDT	None	10	7.5	—	1/3	PCB Mount	LY2O	5ZH40	5ZH41	—	—	7.50	0.2
11	3PDT	2XC08	10	7.5	—	1/3	Standard	LY3	6C878	6C879	—	—	11.93	0.1
14	4PDT	2XC09	10	7.5	—	1/3	Standard	LY4	6C880	6C881	—	—	13.77	0.2
8	DPDT	4KN18	10	5	1/6	1/6	Standard	MY2	5ZJ02	5ZJ03	—	—	6.06	0.1
8	DPDT	4KN18	10	5	1/6	1/6	LED & push to test	MY2IN	5ZJ06	5ZJ07	—	—	6.26	0.1
10	DPDT	5ZJ21	5	—	—	0.90	Dual coil latching	MY2K	5ZJ09	5ZJ10	—	—	17.89	0.1
14	4PDT	5ZJ21	5	5	1/6	1/6	Standard	MY4	6C885	2W933	—	5ZJ11	7.22	0.1
14	4PDT	5ZJ21	5	5	1/6	1/6	LED & push to test	MY4IN	5ZJ14	5ZJ15	—	—	6.86	0.1
8	SPDT	5X853	10	10	1/3	1/2	Standard	MJN1C	5ZH64	—	—	—	11.39	0.2
8	SPDT	None	10	10	1/3	1/2	Range Mount	MJN1CF	5ZH65	5ZH66	—	—	11.55	0.2
8	DPDT	5X853	10	10	1/3	1/2	Standard	MJN2C	5ZH70	5ZH71	—	5ZH69	11.86	0.2
8	DPDT	None	10	10	1/3	1/2	Range Mount	MJN2CF	5ZH73	5ZH74	—	—	10.78	0.2
9	DPDT	5X853	10	10	1/3	1/2	Latching	MJN2CK	5ZH78	5ZH79	—	—	11.75	0.2
11	3PDT	5X853	10	10	1/3	1/2	Standard	MJN3C	5ZH83	5ZH84	—	5ZH82	11.15	0.2
11	3PDT	None	10	10	1/3	1/2	Range Mount	MJN3CF	—	5ZH88	—	—	11.69	0.5
4	SPNO	None	10	7	1/3	1/2	Range Mount	G2R1S	5ZH12	5ZH13	—	—	3.87	0.1
5	SPDT	6C898	10	7	1/3	1/2	Standard	G2R1S	5ZH14	5ZH15	—	—	4.72	0.1
5	SPDT	None	10	7	1/3	1/2	Range Mount	G2R1AT	5ZH16	5ZH17	—	—	4.27	0.1
8	DPDT	6C899	5	2	1/6	1/3	Standard	G2R2S	5ZH19	5ZH18	—	—	5.36	0.1



E6924  
E23563



LL66078



No. 2W818



No. 4KN71



No. 4KP28

## NEMA 1 and 3R Enclosures

Steel enclosures with ANSI 61 gray polyester powder finish inside and out. NEMA 1 units are designed for general use in areas not requiring oil-tight and dust-tight specifications. NEMA 3R units provide excellent protection in outdoor installations against rain, sleet, and snow, or indoors against dripping water.

H	Dimensions (In.)			Cable Depth	Mounting Hole Centers		Knockout Pattern			Interior Panel *	Body/Door Gauge	Wiegmann Model	Stock No.	Each	Shpg. Wt.
	W	D			H	W	1/2"-3/4"	3/4"-1"	1"-1 1/4"						
<b>NEMA 1 SMALL CABINETS</b>															
8.00	6.00	4.00	3.50	4.88	4.88	—	—	—	2W821	16	N1C068804	2W818	\$36.45	4.9	
10.0	8.00	4.00	3.50	6.88	6.88	—	—	—	3A904	16	N1C081004	3A903	44.45	7.0	
12.0	12.0	4.00	3.50	8.88	10.88	—	—	—	2W822	16	N1C121201	2W819	58.50	10.0	
12.0	10.0	6.00	5.50	8.88	8.88	—	—	—	3A937	16	N1C101206	3A905	61.00	11.0	
14.0	12.0	6.00	5.50	10.88	10.88	—	—	—	2W823	16	N1C121406	2W820	72.85	13.0	
14.0	12.0	8.00	7.50	10.88	10.88	—	—	—	2W823	14	N1C121408	3A940	81.15	18.0	
Cylinder Lock For Use On Small Cabinet Enclosures, Keyed Alike												WA-L12B	2W840	18.32	0.2
<b>NEMA 1 LARGE CABINETS</b>															
16.0	12.0	6.63	6.00	13.88	7.00	—	—	—	Included	14	N1C121606	3A906	130.80	21.0	
20.0	16.0	6.63	6.00	17.88	11.00	—	—	—	Included	14	N1C162006	3A907	165.50	33.0	
20.0	16.0	8.63	8.00	17.88	11.00	—	—	—	Included	14	N1C162008	3A908	179.25	34.0	
24.0	20.0	6.63	6.00	21.88	15.00	—	—	—	Included	14	N1C202406	6C714	206.00	44.0	
24.0	20.0	8.63	8.00	21.88	15.00	—	—	—	Included	14	N1C202408	5W275	223.25	47.0	
30.0	24.0	8.63	8.00	27.50	16.75	—	—	—	Included	14	N1C243008	6C715	285.25	74.0	
30.0	24.0	10.6	10.0	27.50	16.75	—	—	—	Included	14	N1C243010	5W276	306.50	78.0	
36.0	30.0	12.6	12.0	33.50	22.75	—	—	—	Included	14	N1C303612	5W277	425.75	111.0	
36.0	24.0	8.63	8.00	33.50	16.75	—	—	—	Included	14	N1C243608	6C716	323.00	85.0	
3 Point Cylinder Lock For Large Cabinet Enclosures, Keyed Alike												WAL12AR	4KP40	28.20	1.0
<b>NEMA 1 HINGED CUTOFF JUNCTION BOXES</b>															
6.00	6.00	4.00	—	2.88	2.88	2	1	—	N/A	16	A060604	4KN71	12.95	3.5	
8.00	8.00	4.00	—	4.88	4.88	2	1	—	N/A	16	A080804	4KN72	17.84	5.5	
12.0	12.0	4.00	—	8.88	8.88	2	2	2	N/A	16	A121204	4KN73	30.15	10.0	
<b>NEMA 1 SCREWCOVER JUNCTION BOXES</b>															
4.00	4.00	4.00	—	—	1.5	1	—	—	N/A	16	SC040404	4KP26	10.37	2.0	
6.00	6.00	4.00	—	2.88	2.88	2	1	—	N/A	16	SC060604	4KP27	12.29	3.6	
8.00	8.00	4.00	—	4.88	4.88	2	1	—	N/A	16	SC080804	4KP28	16.84	5.1	
8.00	8.00	6.00	—	4.88	4.88	2	1	—	N/A	16	SC080806	4KP29	20.18	5.0	
10.0	10.0	4.00	—	6.88	6.88	2	1	2	N/A	16	SC101004	4KP30	22.19	7.3	
10.0	10.0	6.00	—	6.88	6.88	2	1	2	N/A	16	SC101006	4KP31	26.35	8.5	
12.0	12.0	4.00	—	8.88	8.88	2	2	2	N/A	16	SC121204	4KP32	28.45	9.2	
12.0	12.0	6.00	—	8.88	8.88	2	2	2	N/A	16	SC121206	4KP33	33.50	11.0	
<b>NEMA 3R SMALL CABINETS HINGED</b>															
8.00	6.00	4.00	3.50	9.00	3.00	2	1	—	2W821	16	RHC060804	3A913	35.20	5.1	
8.00	8.00	6.00	5.50	9.00	3.00	2	1	—	6C754	16	RHC080806	6C717	50.55	7.3	
12.0	10.0	6.00	5.50	13.00	3.00	2	1	—	3A937	16	RHC101206	3A939	68.10	11.0	
<b>NEMA 3R LARGE CABINETS HINGED</b>															
16.0	12.0	6.00	5.00	17.00	5.00	—	—	—	2W827	14	RHC161206	3A921	94.40	22.0	
20.0	16.0	6.00	5.00	21.00	9.00	—	—	—	2W828	14	RHC201606	6C718	126.60	33.0	
20.0	20.0	8.00	7.00	21.00	13.00	—	—	—	3A922	14	RHC202008	5W278	173.00	43.0	
24.0	24.0	8.00	7.00	25.00	17.00	—	—	—	2W829	14	RHC242408	4KP25	219.75	57.0	
30.0	24.0	8.00	7.00	31.00	17.00	—	—	—	3A924	14	RHC302408	6C719	257.00	67.0	
36.0	24.0	12.0	11.0	37.00	17.00	—	—	—	3A932	14	RHC362412	6C720	381.75	86.0	
<b>NEMA 3R SCREW COVER JUNCTION BOXES</b>															
6.00	4.00	4.00	—	3.00	—	1	—	—	N/A	16	RSC040604	3A909	19.52	3.4	
8.00	6.00	4.00	—	5.00	3.00	2	1	—	N/A	16	RSC060804	6C725	23.42	5.1	
8.00	6.00	6.00	—	5.00	3.00	2	1	—	N/A	16	RSC060806	6C727	27.55	6.5	
8.00	8.00	4.00	—	5.00	5.00	2	1	—	N/A	16	RSC080804	3A910	26.95	6.4	
10.0	8.00	6.00	—	7.00	5.00	2	1	—	N/A	16	RSC081006	6C728	35.85	8.9	
10.0	8.00	4.00	—	7.00	5.00	2	1	—	N/A	16	RSC081004	3A911	30.45	7.4	
12.0	10.0	4.00	—	9.00	7.00	2	1	2	N/A	16	RSC101204	6C726	40.30	8.3	
12.0	10.0	6.00	—	9.00	7.00	2	1	2	N/A	16	RSC101206	3A912	45.30	12.0	
15.0	12.0	4.00	—	12.00	9.00	2	2	2	N/A	16	RSC121504	2W833	50.60	13.0	
18.0	15.0	6.00	—	15.00	12.00	4	2	2	N/A	16	RSC151806	6C729	89.35	20.0	

(\* ) Panel ordering information is on page 567.

**Dayton**



**Relay Sockets**

**SQUARE D**

**OMRON**



**A** No. 5X852



**B** No. 6X156



**C** No. 5B583



**D** No. 2DT94

**E** No. 2XC08



**F** No. 2XC09



**G** No. 2DT97



**H** No. 6C899



**J** No. 6C899



**K** No. 4KN18



**M** No. 6JG21

No. 6X295

Socket Code*	Socket Type	No. of Pins	Mounting Style	Terminals	Electrical Ratings		Dimensions (In.)			Mfr.	Mfr. Model	Stock No.	Each	Shpg. Wt.			
					Volts	Amps	L	W	D								
A	Octal	8	DIN/Screw	Screw	300	15	2.02	1.60	0.83	Dayton	Square D	5X852	\$4.46	0.1			
					300	10	2.40	1.60	0.83			8501NR51			5B586	8.79	
B	Octal	11	DIN/Screw	Screw	300	15	2.20	2.33	0.97	Dayton	Square D	6X156	7.74	0.1			
					300	10	2.37	2.33	0.97			8501NR61			5B585	13.82	
					300	10	2.20	1.70	1.13			8501NR62			5B584	13.82	
C	Square	11	Range/Quick Conn. PCB	Solder PCB	300	15	2.03	1.50	0.54	Dayton	Square D	5X854	1.67	0.1			
					300	15	2.03	1.50	0.54			Dayton			1A247	1.67	
					300	15	3.00	1.70	1.03			Dayton			5X853	8.61	
					300	10	3.13	1.70	1.03			8501NR82			5B583	14.72	
D	Square	8	PCB	PCB	300	10	1.15	0.85	0.60	Dayton	Square D	2A583	1.67	0.1			
					300	10	2.65	1.18	1.08			Dayton			2A582	8.61	
					300	16	3.09	1.175	1.13			Dayton			1FC13	7.00	
					300	10	2.75	1.25	1.00			8501NR42			2DT94	21.47	
					250	15	3.09	1.12	1.18			Omron			PTF08A	4DG59	3.80
					300	10	3.09	1.46	1.18			Omron			PTF11A	2XC08	7.13
E	Square	11	DIN/Screw	Screw	300	10	2.75	1.50	1.00	Square D	8501NR43	2DT96	19.96	0.1			
					300	16	3.09	1.57	1.13			Dayton			1FC14	7.76	
					300	10	2.75	1.50	1.00			Dayton			1FC14	7.76	
F	Square	14	DIN/Screw	Screw	300	16	3.09	1.97	1.13	Dayton	Square D	1FC15	9.90	0.1			
					250	10	3.09	1.79	1.18			Omron			PTF14A	2XC09	7.13
					300	10	2.75	2.00	1.00			8501NR34			2DT92	19.96	
G	Square	14	DIN/Screw	Screw	250	7	3.09	1.79	1.18	Omron	Square D	5ZJ21	7.79	0.1			
					300	10	2.55	1.20	1.00			Dayton			2A584	11.01	
					300	7	2.65	1.20	1.00			8501NR45			2DT97	21.47	
H	Square	5	DIN/Screw	Screw	250	10	3.57	0.61	2.40	Omron	Square D	6C898	4.02	0.1			
					250	5	3.61	0.63	2.48			Omron			P2RF08E	6C899	6.48
K	Square	8	DIN/Screw	Screw	250	7	2.99	—	1.22	Omron	PYF08A-E	4KN18	5.81	0.1			
M	Square	5	DIN/Screw	Screw	300	15	1.66	.787	1.07	Dayton	—	6JG21	6.15	0.1			
N	Flange Adapter can be used top or bottom				—	—	—	—	—	Dayton	—	5YP70	1.72	0.1			
N	Din Rail mounted flange adapter				—	—	—	—	—	Dayton	—	5YP71	2.90	0.1			
—	35mm DIN Type mounting track				—	—	39%	1%	5/16	Omron	PPF-100N	6X295	7.19	0.4			

(\*) See relay socket compatibility chart on page 306.

= Shipped Directly from Manufacturer

= Order 4 per Oven

= New Item

**GRAINGER.** | 403



✓ = Order 1 per Oven



No. 2F456

## Type T & E Transformers

Designed to handle high inrushes associated with contactors and relays. Copper wound, vacuum impregnated with varnish. 50/60 Hz. 100% tested in compliance with ANSI, CSA, UL codes, and CE requirement EN60742.

Type E transformers offer high efficiency for applications that require exceptional regulation and very low temperature.

- 50-150VA models: 55°C temperature rise, 105°C insulation class
- 200-350VA models: 80°C temperature rise, 130°C insulation class
- 500-3000VA models: 115°C temperature rise, 180°C insulation class
- 50-3000VA models meet UL, CE, CSA, NOM requirements

UL VA	CE VA	Primary Voltage	Secondary Voltage	Dimensions (In.)			Square D Model	Stock No.	Each	Shq. Wt.
				L	W	H				
<b>TYPE T</b>										
50	50	240/480	120	3.00	3.09	2.56	9070T50D1	4R874	\$45.00	2.5
50	50	208	120	3.00	3.09	2.58	9070T50D3	4R888	43.95	3.9
50	50	277	120	3.00	3.09	2.58	9070T50D4	4R890	43.95	2.6
50	50	208/230/460	115	3.38	3.34	2.89	9070T50D20	4R884	61.20	3.9
50	50	120	12/24	3.00	3.09	2.58	9070T50D13	4R876	44.05	2.5
50	50	208	24	3.00	3.09	2.58	9070T50D14	4R878	44.05	2.6
50	50	120/240	24	3.00	3.09	2.58	9070T50D23	4R886	44.05	2.5
50	50	240/480	24	3.00	3.09	2.58	9070T50D2	4R882	50.25	2.5
75	75	240/480	120	3.38	3.34	2.89	9070T75D1	4R894	44.95	3.8
75	75	120	12/24	3.38	3.34	2.89	9070T75D13	4R896	53.45	3.7
75	75	120/240	24	3.38	3.34	2.89	9070T75D23	4R900	53.45	3.9
75	75	240/480	24	3.38	3.34	2.89	9070T75D2	4R898	53.45	2.6
100	100	240/480	120	3.38	3.34	2.89	9070T100D1	4R822	58.80	3.8
100	100	208	120	3.38	3.34	2.89	9070T100D3	4R834	63.55	3.9
100	100	277	120	3.38	3.34	2.89	9070T100D4	4R836	63.55	3.9
✓ 100	100	120	12/24	3.38	3.34	2.89	9070T100D13	4R824	60.85	3.8
100	100	208	24	3.38	3.34	2.89	9070T100D14	4R826	60.85	3.9
100	100	120/240	24	3.38	3.34	2.89	9070T100D23	4R832	60.85	3.9
100	100	240/480	24	3.38	3.34	2.89	9070T100D2	4R830	70.50	3.8
150	150	240/480	120	3.75	3.59	3.20	9070T150D1	4R840	72.30	5.6
150	150	277	120	3.75	3.59	3.20	9070T150D4	4R852	83.00	5.5
150	150	208/230/460	115	3.75	4.81	3.25	9070T150D20	4R848	91.45	5.5
150	150	120	12/24	3.75	3.59	3.20	9070T150D13	4R842	77.60	3.8
150	150	120/240	24	3.75	3.59	3.20	9070T150D23	4R850	77.60	5.4
150	150	240/480	24	3.75	3.59	3.20	9070T150D2	4R846	93.30	5.5
200	160	240/480	120	3.75	3.59	3.20	9070T200D1	4R856	68.50	5.5
250	160	240/480	120	3.75	5.25	3.25	9070T250D1	4R858	88.55	7.9
250	160	120	12/24	3.75	5.25	3.25	9070T250D13	4R860	124.40	9.5
300	200	240/480	120	4.50	4.70	3.80	9070T300D1	4R864	88.30	9.1
300	200	120	12/24	4.50	4.70	3.80	9070T300D13	4R866	126.50	9.2
350	250	240/480	120	4.50	5.09	3.80	9070T350D1	4R868	90.85	11.0
500	300	240/480	120	4.50	5.46	3.80	9070T500D1	4R870	148.60	12.0
500	300	120	12/24	4.50	5.46	3.80	9070T500D13	4R872	153.00	12.0
750	500	240/480	120	5.25	5.66	4.43	9070T750D1	4R892	207.25	18.0
1000	630	240/480	120	5.25	6.84	4.43	9070T1000D1	2F456	254.75	21.0
1500	1000	240/480	120	7.06	5.81	6.16	9070T1500D1	4RM77	261.75	37.0
2000	1500	240/480	120	7.06	7.04	6.19	9070T2000D1	4RM78	318.50	50.0
3000	2000	240/480	120	9.00	6.86	8.46	9070T3000D1	4RM79	441.25	62.0
<b>TYPE E</b>										
50	35	240/480	120	3	3.31	2.5	9070E01D1	2CT36	48.60	2.3

☒ = Shipped Directly from Manufacturer

✓ = Order 1 per Oven

★ = New Item