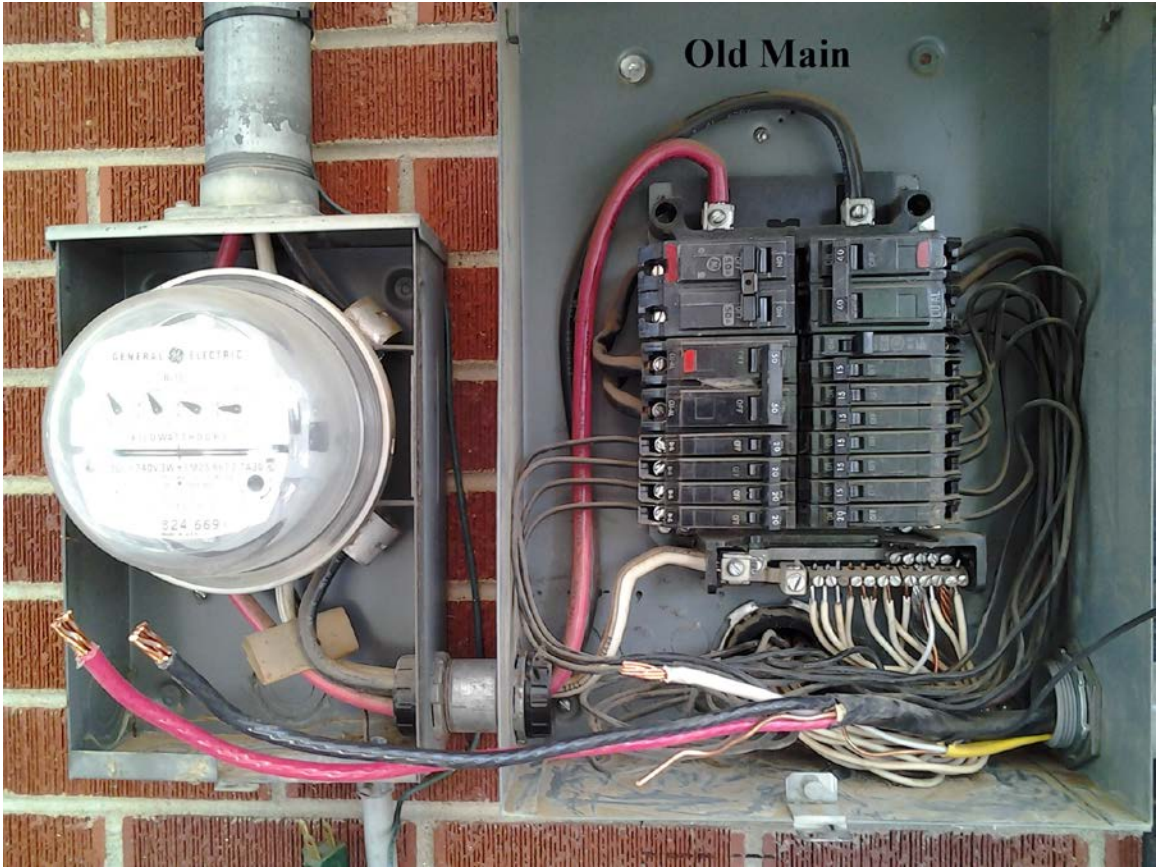
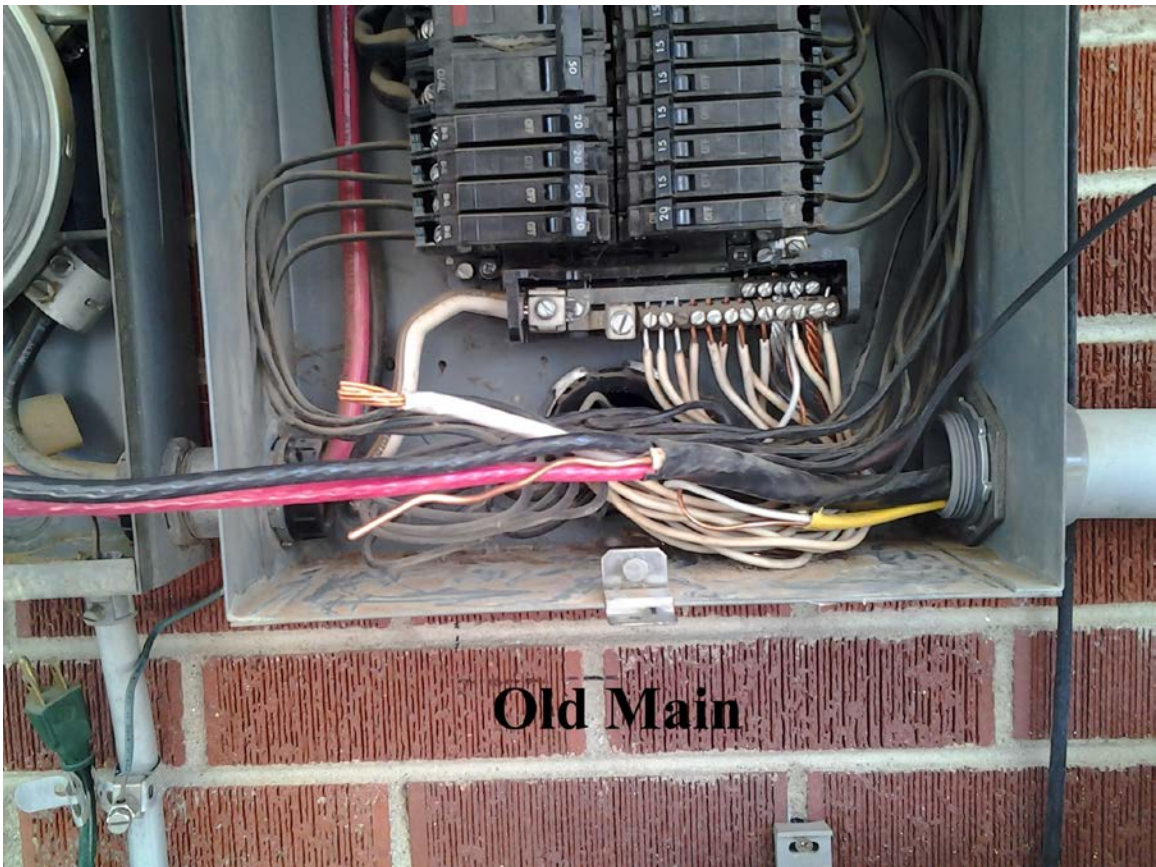


Electrical Service Upgrade



Had to pull new connections to the sub boxes to the shed and new AC



Just hooked up main feed to the new box



Also sunk a new 8' ground rod with a 6-gauge solid copper wire to meter



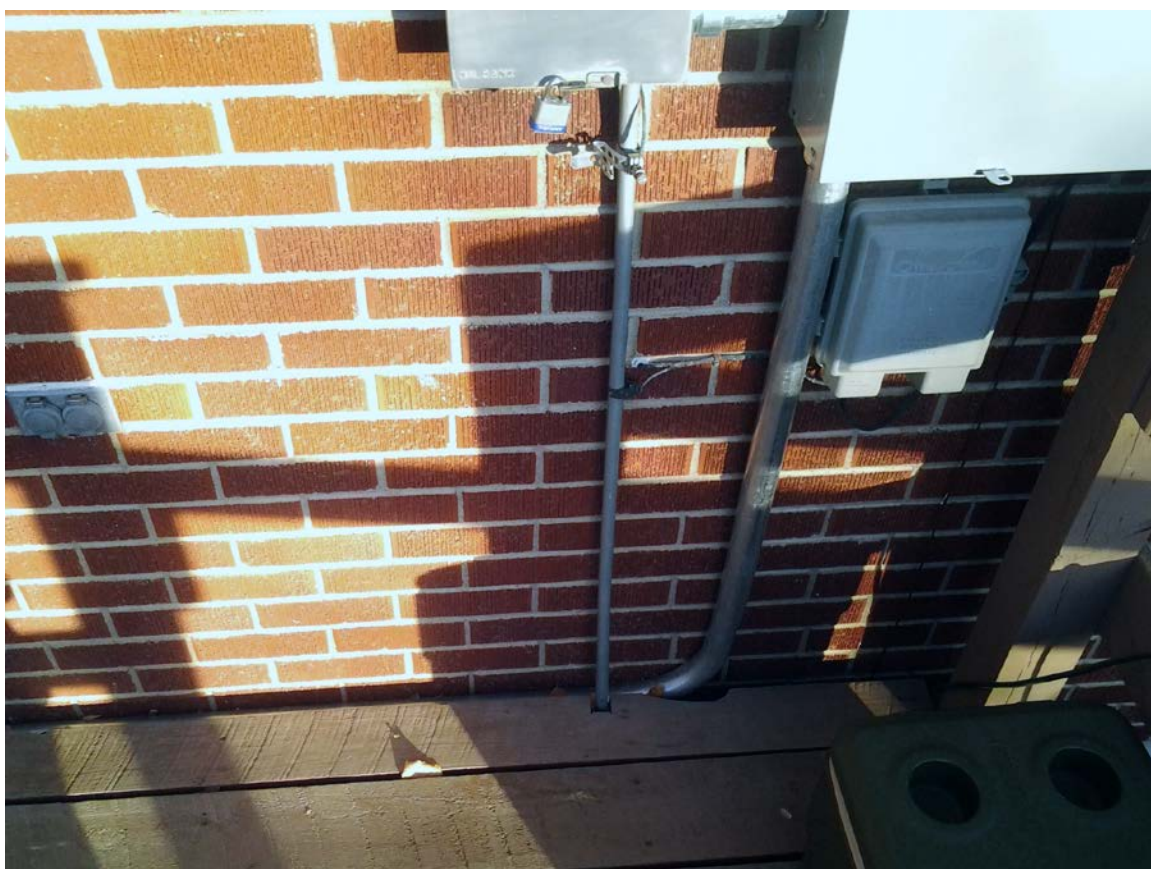
4 hours later all the main house lines are back on



Lines for the sheds sub box and the new AC Condenser pulled



Down to the AC Condenser



1 ½ ridged to the AC with 240 volt and 120 V. for the service outlet



Our first summer at the new house was quite hot, and now after I have incorporated central air in to the existing forced air system we will be chillin.

This was however the reason that I needed to update the main service box. Not to mention that I have pulled three extra 240 volt lines for the welders and plasma cutter



Now the electrical system is done with 8 extra circuits for expansion

